

# GEONEX GR 15

## GEONEX DTH-DRILLING ROTARY HEADS



Geonex Rotary Heads are engineered for DTH-Drilling. Design is compact and strong engineered for both horizontal and vertical drilling. Rotary head can be mounted straight to feed carriage or as an option, there is also possibility for tilt function with cuttings collector. Speed switching valve option and different motor sizes also enables drilling of large diameter range. Rotary head has in-built air swivel with large hole through.

## APPLICATIONS FOR GEONEX GR 15

✓ **HZR400 horizontal drilling rig**

The GR15 rotary head is compatible with the HZR400 horizontal drilling rig.

✓ **Vertical drilling and micro piling rigs**

The rotary head is engineered for both horizontal and vertical drilling applications.

✓ **Anchoring and special drilling rigs**

The GR15 can be attached to a variety of special drilling rigs from different brands.

## TECHNICAL INFORMATION

### Geonex GR 15

Weight kg (lb)	200(440)
Length (with out threads adapter) mm (ft in)	363 (1' 3")
Width mm (ft in)	400 (1' 4")
Height mm (ft in)	370 (1' 3")
Thread connection (can be specified according to customer needs)	Api Reg 2 3/8"F, Api Reg 3 1/2"F, Api Reg 4 1/2"F
Max oil flow lpm (gpm)	270 (71)
Max pressure Bar (psi)	250 (3625)



**GEONEX OY**

Tel. +358 400 693 143

info@geonex.fi

Teollisuustie 9, FI-95600 Ylitornio, Finland

FOR MORE INFORMATION VISIT

[www.geonex.fi](http://www.geonex.fi)

# GEONEX GR 15

GEONEX DTH-DRILLING ROTARY HEADS

Geonex GR 15	
Hydraulic motor size cm <sup>3</sup> /r (cid)	min. 200 (12) max. 400 (24)
Max rotation torque, slow gear Nm (ftlb)	min. 7500 (5530) max. 15000 (11060)
Max rotation speed, slow gear r/min	min. 60 max. 30
Max rotation torque, fast gear Nm (ftlb)	min. 5000 (3690) max. 10000 (7370)
Max rotation speed, fast gear r/min	min. 90 max. 45

Options	
OPTION	Speed switching valve
OPTION	Tilt function
OPTION	Sliding cuttings collector
OPTION	Different sub savers



**GEONEX OY**

Tel. +358 400 693 143

info@geonex.fi

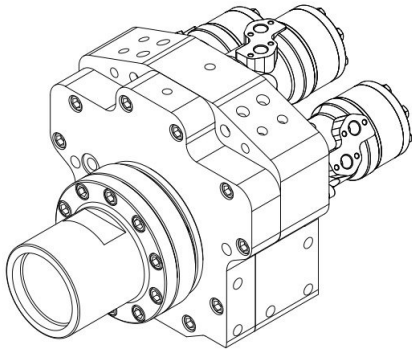
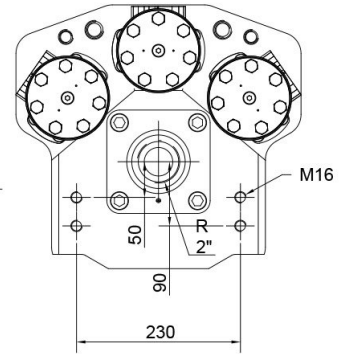
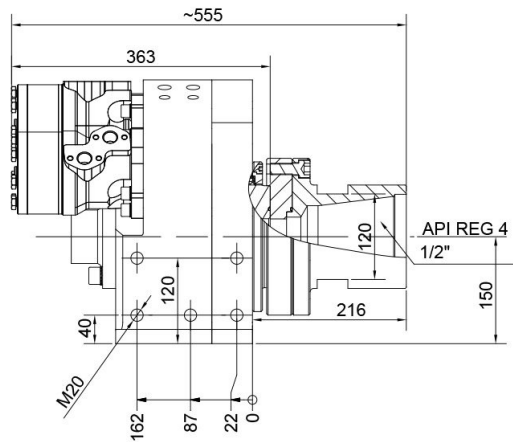
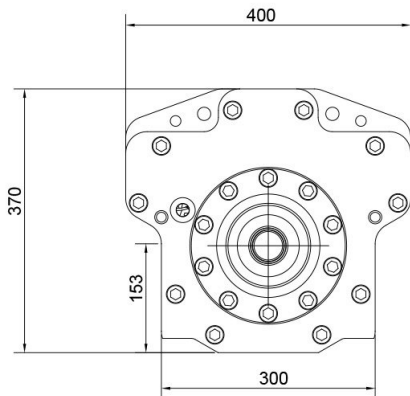
Teollisuustie 9, FI-95600 Ylitornio, Finland

FOR MORE INFORMATION VISIT

[www.geonex.fi](http://www.geonex.fi)

# GEONEX GR 15

GEONEX DTH-DRILLING ROTARY HEADS



GEONEX GR12 ROTARY HEAD